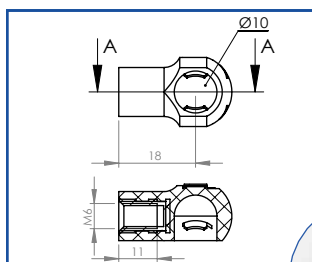


KONCOVKY

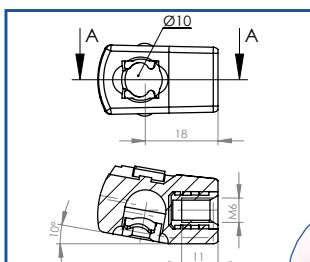
PRE PLYNOVÉ VZPERY S UKONČENÍM M6

POUŽITÉ NA PLYNOVÉ VZPERY S PRIEMEROM PIESTU 6 mm A 8 mm



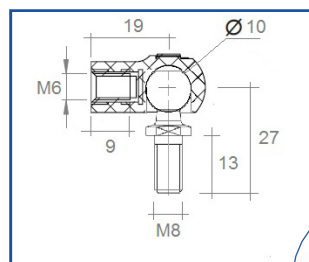
REF 72421

PLASTIC



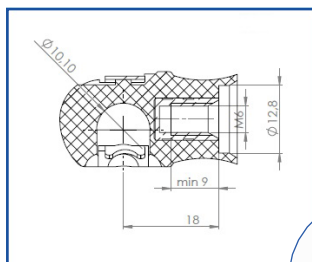
REF ST 07 2421-110

STEEL



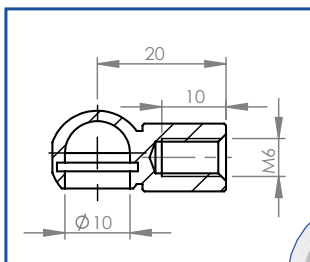
REF 72421AC-10E

STEEL



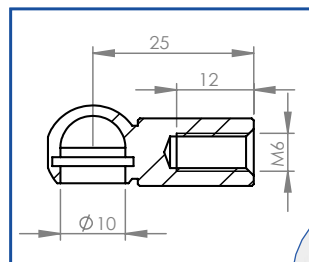
REF 72421AT

PLASTIC



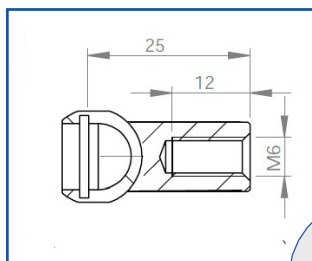
REF 92221

STEEL



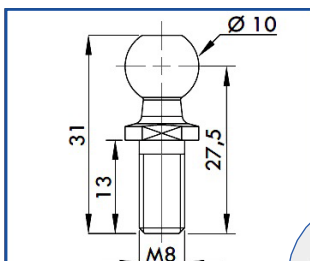
REF 92220

STEEL



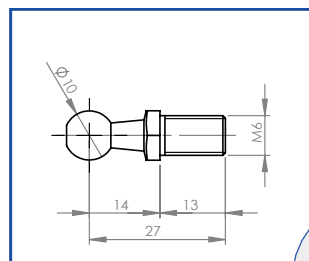
REF 92220A

STEEL



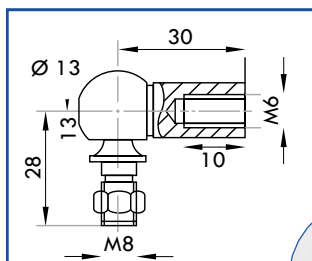
REF 92990

STEEL



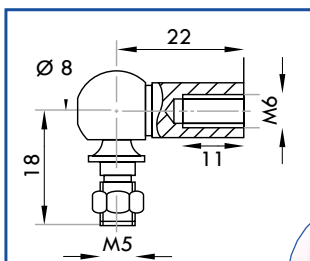
REF 92989

STEEL



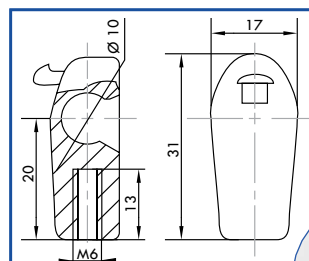
REF 92220-13 E

STEEL



REF 92220-6-5

STEEL



REF 92722

PLASTIC



KONCOVKY PRE PLYNOVÉ VZPERY S UKONČENÍM M6

POUŽITÉ NA PLYNOVÉ VZPERY S PRIEMEROM PIESTU 6 mm A 8 mm

